

TRENDS

A Newsletter of the Mississippi Poultry Association

U. S. SENATOR HYDE-SMITH COSPONSORS "FARMERS FREEDOM ACT"

John E. Milner, MPA Counsel - Brunini, Grantham, Grower & Hewes, PLLC



On December 3, Mississippi's U.S. Senator Cindy Hyde-Smith (R-Miss.) announced she has cosponsored legislation to combat federal regulatory overreach as the Biden administration continues its efforts to impose Clean Water Act restrictions on crop and rangeland.

Hyde-Smith is an original cosponsor of the Farmers Freedom Act of 2023 (S.3366) ("FFA23"), which would protect the definition of prior converted cropland ("PCC") from the Biden administration's most recent Waters of the United States ("WOTUS") rule. U.S. Senator Mike Rounds (R-S.D.) authored the legislation, which is supported by the American Farm Bureau.

"Prior converted cropland has been exempted from the WOTUS regulations for decades, but President Biden's EPA just can't help itself from overregulation. Unfortunately, it will be our farmers and ranchers paying the price," Hyde-Smith said. "This legislation would shield them from excessive red tape and provide them with greater certainty that they can use their land as they see fit."

"For far too long, producers have been subject to a number of complex and burdensome WOTUS rule changes," Sen. Rounds stated. "The previous Navigable Waters Protection Rule worked to protect owners of prior converted cropland from undue regulation while providing producers with needed flexibility." He also stated that "the legislation seeks to restore this definition of prior converted cropland and prevent further overreach on farmers and ranchers, who know their land better than any D.C. bureaucrats."

Sen. Kevin Cramer (R-ND), one of the co-sponsors, says landowners need more freedom to use their land as they see fit without excessive and burdensome environmental regulations. "Producers are always the best land caretakers," Cramer commented.

continued on next page



WHAT'S INSIDE:

- **MACK WALKER IS 2024 BOARD CHAIR**
- **CATCHOT IS NEW MSU EXTENSION DIRECTOR**
- **POULTRY HEALTH AGENDA SET FOR FEB. 14**
- **BIOSECURITY REVIEW FROM MSU LAB**
- **THREE FINALISTS FOR FINEST FRIED CHICKEN**

continued from cover

Wetlands converted to cropland before 1985 have remained exempted from WOTUS regulation. Under the Biden administration's rule, previously-converted cropland could revert to a wetland status if it is unavailable for commodity production. Specifically, if a section of PCC floods and is unable to produce commodities, it could be subject to regulation under the authority of the Clean Water Act.

FFA23 seeks to allow landowners the freedom to utilize their PCC as is most suitable for their operations without unnecessary red tape by restoring the definition of PCC as outlined in the Navigable Waters Protection Rule (NWPR) finalized by the Trump administration in 2020. The NWPR clarified the rules governing PCC, protecting impacted land

from Clean Water Act regulation as long it was used for agricultural purposes once every five years.

FFA23 has been referred to the Senate Environment and Public Works Committee. It is also cosponsored by U.S. Senators John Thune (R-S.D.), Pete Ricketts (R-Neb.), Roger Marshall, M.D. (R-Kan.), Mike Braun (R-Ind.), John Hoeven (R-N.D.), John Barrasso (R-Wyo.), and Kevin Cramer (R-N.D.).

We will keep you updated with regard to this important issue. If you have any questions concerning this article, please contact the author, John Milner of Brunini Law Firm, who is MPA Counsel, at jmilner@brunini.com or (601) 291-4696; or Mark Leggett, MPA President, at leggett@mspoultry.org or (601) 932-7560. ■

MACK WALKER IS 2024 MPA BOARD CHAIR

On January 1, Mack Walker takes over as the 2024 chair of the Mississippi Poultry Association Board of Directors. Walker, Complex Manager for Tyson Foods in Forest, has served on the MPA Board for 20 years.

Mack graduated from Magee High School and went on to further his education at Mississippi State University, graduating in 1975. In January 1976, Mack went to work in the McCarty Farms processing plant in Jackson. After two years in the plant, Mack was transferred to Magee Live Production to service broilers for McCarty. From there, Mack became a Broiler Manager, then Live Production Manager and now is Complex Manager for Tyson Foods Live Production in Mississippi. Tyson Foods bought McCarty Farms in 1995.

Mack and his wife Toni have four children and four grandchildren. They attend Goodwater Baptist Church where he is a deacon.

"One of my goals as chairman of the association will be to get the processing folks more involved in the association's committees and educational activities, also to enlist their

help in growing the association's allied membership," Walker said.

Walker replaces Bobby James of Amick Farms in Laurel, now immediate past chair of the MPA board. Other members of the Executive Committee

are Vice Chair Ed Fletcher, Koch Foods; Treasurer Paul Billingsley, Wayne-Sanderson Farms; Past Chair Dr. Ryn Laster, Cal-Maine Foods; Members At-Large Steve McLaurin, Peco Foods, and James Faison, Mar-Jac Poultry MS; and Grower Advisory Committee Chair Kevin Rhodes, a Koch grower.

MPA was founded in 1937 and represents poultry processors, poultry growers and allied members that provide goods and services to the state's largest agricultural industry. Poultry has a \$23 billion impact on Mississippi's economy. ■



Thursday, April 11, 2024

Magnolia Beef & Poultry Expo

131 SCR 77 (Oil Field Road)
Raleigh, MS 39153

The 2024 Magnolia Beef and Poultry Expo will have a great tradeshow, with many vendors and door prizes. This event is free to the public and will offer educational opportunities to beef and poultry producers. For more information, please contact the Jones County Extension Office, 601-428-5201.



EMERGING TRENDS

A Newsletter of the Mississippi Poultry Association

2023 ■ Issue 4

GROWER ADVISORY COMMITTEE

Matthew Anglin ■ Amick Farms
Ricky Boler ■ Peco Foods
Stanley Brewer ■ Mar-Jac Poultry
Kim Caldwell ■ Peco Foods
Michelle Carter ■ Koch Foods
Todd Dupre ■ Tyson Foods
Dwight Easterling ■ Tyson Foods
Jobie Evans ■ Amick Farms
Perry Feazell ■ Tyson Foods
Jeren Ferguson ■ Mar-Jac Poultry
Taylor Hickman ■ Wayne-Sanderson Farms
Billy Hyatt ■ Amick Farms
Danny Madison ■ Amick Farms
Sean McDonald ■ Amick Farms
Peter McKinley ■ Wayne-Sanderson Farms
Stan Norwood ■ Amick Farms
Brian Rhodes ■ Koch Foods
Kevin Rhodes ■ Koch Foods
David Robinson ■ Peco Foods
Kevin Shirk ■ Tyson Foods
Danny Thornton ■ Peco Foods
Kenneth Upton ■ Wayne-Sanderson Farms
Jon Wilson ■ Peco Foods
Alan Young ■ Tyson Foods

MISSISSIPPI POULTRY ASSOCIATION

Bobby James ■ Chair
Mack Walker ■ Vice Chair
Kevin Rhodes ■ Grower Advisory Committee Chair
Mark Leggett ■ President
 leggett@mspoultry.org
Lauren Fortenberry ■ Event Coordinator
 fortenberry@mspoultry.org

If you want to join the Mississippi Poultry Association as a Grower Member, call the MPA office at (601) 932-7560 for more information!

IN THIS ISSUE

U. S. Senator Hyde-Smith Cosponsors "Farmers Freedom Act"	COVER
Mack Walker is 2024 MPA Board Chair.....	INSIDE COVER
Save the Date: Magnolia Beef & Poultry Expo.....	INSIDE COVER
Catchot Named Director of MSU Extension	3
MPA Poultry Health Seminar Scheduled	3
Lincoln County 4-H Competed in National Avian Bowl	4
Disease Update: LT and HPAI Return	7
Special Discount Offered to Poultry Growers to Attend IPPE 2024.....	8
A Biosecurity Review	10
New Legislature Faces Weighty Issues in 2024	11
Youth Contests Educate Students About the Poultry Industry.....	13
Gov. Reeves Commends MPA's 12th Annual Chicken, Egg Donation...	13
McLaurin Portrait Installed in Miss. Poultry Hall of Fame	15
Mississippians Chose Three Finalists for Best Fried Chicken.....	17
Member Spotlight: NOVUS	19
Nearly 200 Enrolled in 12th Annual Poultry Chain in 2023	21
Bankplus Scholarship Allows Two MSU Students to Present Pathogen Research Findings	23
Three Students Win Southern AG Credit Travel Grant to Present Research at IPPE in January	25
MPA Allied Industry Committee Supports MSU's Future Poultry Leaders.....	25
MSU Receives US Poultry 2023 Recruiting Grant.....	27
MPA Provides Prizes to Top 4-H Omelet Chefs.....	25
MSU Poultry Science BBQ Chicken Recipe	31
Upcoming Events.....	BACK COVER

CONTACT INFORMATION

110 Airport Road South, Suite C ■ Pearl, Mississippi 39208
 Phone: (601) 932-7560 ■ www.mspoultry.org



POULTRY FACILITIES

Loans

A very specific loan product for a very specific client

BankPlus has a strong commitment to agriculture and to integrated poultry lending. For over 100 years, BankPlus has built our success on providing Mississippi farmers with customized financial services, great products and support that promotes agricultural production.

Our loan officers understand the unique challenges that modern farming operations face and are equipped with the skills and expertise to craft flexible loan products to meet your individual needs. Also, BankPlus has been recognized as a Top SBA Lender in MS.

FREE GIFT!

Retro Fit, Refinance or Purchase your poultry facility with a \$500K+ loan from BankPlus and we'll bring you a free gift at closing!

BankPlus®

BankPlus.net

Leigha McLendon

First Vice President and
Director of Guaranteed Lending
601-607-4389
LeighaMcLendon@BankPlus.net

Kenny Williamson

Senior Vice President &
Commercial Lending Team Leader
601-607-4402
KennyWilliamson@BankPlus.net

MEMBER FDIC |  | © 2019 BANKPLUS

CATCHOT NAMED DIRECTOR OF MSU EXTENSION

Mary Kathryn Kight, Senior Communications Manager, Vice President's Office, Division of Agriculture, Forestry, and Veterinary Medicine



STARKVILLE, Miss.—Mississippi State University Extension has a new leader with a long history of connecting Mississippians with information they need through research, education and outreach. Angus L. Catchot Jr. is the new MSU Extension director, effective Nov. 1.

“Dr. Catchot brings a strong administrative background along with a solid record of teaching and research accomplishments to the task of leading Extension professionals and support staff in continuing our tradition of serving the people of Mississippi in every county,” said MSU President Mark E. Keenum. “I am confident that Angus will build on that tradition as we share the latest technologies and methods in our educational programming.”

The committee leading the national search for the position included Extension professionals throughout the state, as well as industry stakeholders.

MSU Division of Agriculture, Forestry and Veterinary Medicine Vice President Keith Coble said during the interview process, “It was clear Angus has an energy and passion for Extension and what it means to serve our state. Angus is uniquely poised to step into this role, as one of his greatest strengths is his communication ability.”

Catchot currently serves as the associate director of the Mississippi Agricultural and Forestry Experiment Station and a professor in MSU's College of Agriculture and Life Sciences. Additionally, he has served as interim head of the Central Mississippi Research and Extension Center from Sept. 2022 to Oct. 16, 2023. Catchot succeeds Steve Martin, who has served as interim Extension director since September 2022.

“I'd like to thank Steve for leading Extension over the past year. He is a true example of a servant leader,” Coble said.

A triple MSU College of Agriculture and Life Sciences alumnus, Catchot earned his bachelor's degree in ag pest management and both his master's and doctoral degrees in entomology. He worked for Monsanto Company for six years before returning to his alma mater as an Extension faculty member specializing in row crop entomology.

During his nearly 20-year professional experience at MSU, Catchot has served as the major or co-major professor to dozens of graduate students who now serve the agricultural industry both state- and nationwide.

In his previous roles, Catchot has supported efforts to extend science-based research to stakeholders throughout the midsouth, providing research and demonstration trials, field visits and one-on-one communication. He's an active member of the Mississippi Association of County Agricultural Agents, Mississippi Agricultural Industry Council, Mississippi Entomological Association and Entomological Society of America.

“From the individual agents in each of the 82 counties to the faculty on campus and around the state at our Research and Extension Centers, MSU Extension strives to enhance the social, economic, and cultural well-being of every citizen. I am excited and honored to lead such an outstanding group of people and an organization that is dedicated to the land-grant mission,” Catchot said.

Catchot and his wife, Beverly, both are natives of Stone County. They have two sons, Angus Catchot III and Ty Catchot, as well as one grandson, Angus Catchot IV. ■



Angus L. Catchot Jr.
MSU Extension Director

MPA POULTRY HEALTH SEMINAR SCHEDULED FOR FEBRUARY 14 AT MISS. AG MUSEUM

The Mississippi Poultry Association's 10th annual Poultry Health Seminar will be February 14, 2024, in the Forestry Auditorium at the Mississippi Agriculture and Forestry Museum. The tentative schedule is shown below.

PAACO has awarded 7 hours credit for this seminar and RACE has awarded 6 hours credit for veterinarians.

To be a sponsor and/or to register, contact Lauren at MPA, fortenberry@mspoultry.org or 601-932-7560.

8:00 – 8:40 REGISTRATION

8:40 – 8:45	WELCOME Danny Magee, Professor Emeritus, MSU PRDL, Pearl, MS
8:45 – 9:30	ILT Control Strategies in Hot Challenge Areas Emma Castillo, Technical Services Veterinarian, Merck Animal Health
9:30 – 10:00	IBV in pullets and broiler breeders Erin Riley, Technical Services Veterinarian, Ceva

continued on next page

10:00 – 10:20 Anticoccidial Resistance Studies
Nicholas Brown, Technical Services
Veterinarian, Huvepharma

10:20 – 10:40 BREAK

10:40 – 11:00 Regulatory Update
Jim Watson, Mississippi State Veterinarian,
MBAH, Jackson, MS

11:00 – 11:20 Avian influenza: Detections in wild birds
Kris Godwin, USDA APHIS, Miss. Wildlife
Services State Director, Miss. State, MS

11:20 – 11:40 PRDL Update
Natalie Armour Manginsay, CVM-PRDL,
Mississippi State University

11:40 – 12:00 Regulations: Salmonella
Jonathan James, Senior Director of
Food Safety and Laboratory Services,
Wayne-Sanderson Farms

12:00 – 12:45 LUNCH

12:45 – 1:05 Identification and characterization of
Enterococcus cecorum recovered
from commercial poultry cases
Marcela Arango, Master's Candidate, CVM-
PRDL, Mississippi State University

1:05 – 1:25 Commercial layer topics
Gunnar Dunnam, Corporate Veterinarian,
Cal-Maine Foods

1:25 – 1:45 E. coli and Salmonella in Layers
Pratima Adhikari, Associate Professor,
MSU Poultry Science

1:45 – 2:15 Stop the Burn-what you can do to prevent,
detect, and respond to fires in the poultry barn
Brandon Mulnix, Dir. of Commercial Accts.,
Prism Controls

2:15 – 2:30 BREAK

2:30 – 3:00 SRP Vaccine Technology
Dan Domingo, Vaxxinova

3:00 – 3:30 Myco-Marker: Blood and Feed Monitoring for
Mycotoxin Risk
Don Ritter, Poultry Business Solutions LLC,
Norfolk, VA

3:30 – 3:50 Litter consumption of broiler chickens during
the starter period
Stephanie Whitham, USDA ARS, Poultry
Research Unit, Miss. State, MS

3:50 – 3:55 Final Comments and Adjourn
Danny Magee, Professor Emeritus, MSU PRDL,
Pearl, MS ■

LINCOLN COUNTY 4-H COMPETED IN NATIONAL AVIAN BOWL

Lincoln County 4-H represented Mississippi in the Avian Bowl Contest at the 2023 National Poultry and Egg Conference in Louisville, KY, with the help of a Mississippi Poultry Foundation donation.

“This was the first year that a Mississippi team has competed in the National Avian Bowl competition, and we want to encourage more teams to participate in the state-level competition next year with the winner advancing to the national competition,” said Tannah Christensen, MSU Poultry Science Department Extension Instructor.

Before the team could compete in Kentucky, they had to qualify on the State Level. Teams competed at the 2023 State 4-H Congress where students were tested on topics related to the avian systems, breeds, varieties, and strains, eggyclopedia, small turkey flock, changing world of poultry and eggs market, embryology, and non-food uses of poultry and eggs.

On the national level there were 15 states and 52 students competing in the Avian Bowl Contest.

“We appreciate the Mississippi Poultry Foundation’s support to help youth put their talents and knowledge to use in national competitions,” said Christensen. “Participating in this event allows students to network and cultivate relationships that will benefit them through their professional careers.” ■



The members of the Lincoln County 4-H Avian Bowl team and their instructor, Jennifer Williams, far left, won the state competition and qualified to compete in the national competition in November in Louisville, KY. Students from left are: Samuel McDaniel, Joseph McDaniel, Eden Conn, and Isabella Conn.



Strong
ACTIVE
PROTECTION
that starts at the
very source.

THE VAXXITEK® PORTFOLIO OF VACCINES
FOR A LIFETIME OF PERFORMANCE.

Visit www.poultryhealthusa.com for more information.



VAXXITEK® is a registered trademark of Boehringer Ingelheim Animal Health USA Inc. ©2023 Boehringer Ingelheim Animal Health USA Inc., Duluth, GA. All Rights Reserved. US-POU-0020-2021-V3

Original Solutions •  Boehringer Ingelheim

Virus Elimination. Condensation & Ice Removal. Turnkey Services. Sunbelt Rentals.



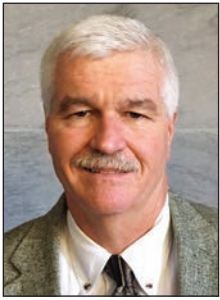
Sunbelt Rentals offers a wide range of poultry facility solutions including efficient condensation control and heat treatment solutions for virus elimination. We offer the newest fleet of chillers, industrial air conditioners, heaters, drying equipment, temporary power, blended systems and more. Designed to be self-contained, our equipment provides efficient, dependable performance with easy operation and mobility. In addition, we offer unmatched 24/7 emergency response, turnkey service and highly trained specialists with the knowledge and experience to respond quickly to all of your needs.

24/7 EMERGENCY RESPONSE | 888-379-7454 | SUNBELTRENTALS.COM



DISEASE UPDATE: LT AND HPAI RETURN

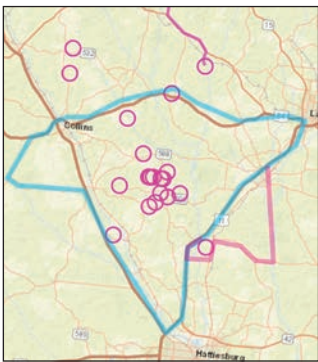
James A. Watson DVM, Dip ACVPM, State Veterinarian, Mississippi Board of Animal Health



Unfortunately, the Board of Animal Health has been busy the past two months dealing with poultry diseases here in Mississippi. We are currently dealing with an outbreak of Infectious Laryngotracheitis or “LT” that began back in August. This is our first large scale outbreak since the spring of 2012.

The early attempts to stop spread of disease using control measures in October included establishing a Vaccination Zone to allow the use of the live Chick Embryo Origin or CEO vaccine. All but four of the 22 cases are in a triangle between Collins and Laurel and Hattiesburg. The zone has since been amended to accommodate cases that have occurred outside the zone. In addition to vaccination, a litter movement restriction is in place, and can only occur with a permit from the Board of Animal Health.

Vaccination Zone with circles representing the positive cases.



In addition to dealing with “LT” we also had to respond to five shipments of quail and pheasants that came from a Highly Pathogenic Avian Influenza (HPAI) infected gamebird breeder in Alabama to Mississippi. Fortunately, we were able to locate the birds and get them depopulated, as well as clean and disinfect the premises in a timely fashion.

This does bring up the point, that in spite of the summer lull, HPAI is on the move in North America again and the US has experienced a large increase in domestic poultry infections including the two in Alabama and several in Arkansas.

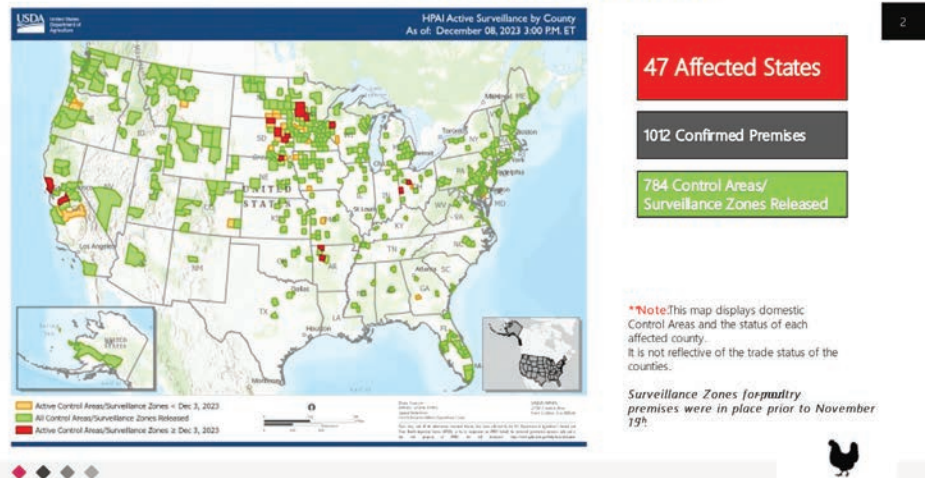
The last two submissions of hunter-killed ducks along the Mississippi River have had a high percentage of birds test positive for HPAI indicating a large amount of virus available for contamination of the environment and therefore potential for infection of domestic poultry. The map shows the current outbreaks in orange and red. Our highest risk is between now and April, realizing that as with Alabama it can occur any time.

The Board of Animal Health website has a place for people to report sick/dead migratory waterfowl or backyard poultry online, for us to assess the need for

testing for HPAI, and to arrange for delivery to lab. <https://www.mbah.ms.gov/>

Overview of Cumulative HPAI Cases in the US since 2022. Orange and Red are ongoing outbreaks, Green indicates previous outbreaks (the two green areas represent the two cases Alabama had last month). Currently Mississippi does not have any outbreaks.

OVERVIEW OF THE NATIONAL SITUATION



Highly Pathogenic Avian Influenza (HPAI) Update

Please continue to practice good biosecurity. Before 2015 we talked about how to keep it off your farm, thinking if we could keep it out of the front gate we were safe (cleaning shared equipment, changing clothes before checking on your chickens when you have been to town etc.). However, we now know that in addition to those things, you have to make sure you are keeping it out of each poultry house!

Ducks and geese fly over and leave virus-infected feces for you to step in, vultures move from composter to composter, maybe after eating a dead infected goose or duck. Wild birds and varmints are attracted to spilled feed and take advantage of holes in the walls of chicken houses. It is crucial that nothing enters a poultry house that is contaminated with outside mud, manure etc., so you should put on a pair of disposable boot covers prior to entering the door to each house. Practicing good biosecurity requires discipline, but the stakes are too high not to do everything possible to keep these deadly diseases out of your poultry houses.

Be safe and I pray that you and your family have a Merry Christmas as we celebrate the birth of our Savior Jesus Christ!

SPECIAL DISCOUNT OFFERED TO POULTRY GROWERS TO ATTEND IPPE 2024

TUCKER, Ga. – Oct. 3, 2023 – Poultry growers are invited to attend the 2024 International Production & Processing Expo (IPPE) with a special registration fee of only \$5 (onsite only), an excellent savings of \$125! This program is open to U.S. residents only.

“We strongly encourage poultry growers to take advantage of this opportunity to attend IPPE at such a great price. They will be able to EXPERIENCE IT ALL in IPPE’s more than 588,500 (and growing) square feet of exhibit space. Attending IPPE will allow you to build relationships, find new suppliers and vendors, and connect with your friends and

colleagues in one place, at one time. Join us in Atlanta to EXPERIENCE IT ALL at the 2024 IPPE!” said IPPE show organizers.

IPPE will be held at the Georgia World Congress Center in Atlanta from Jan. 30- Feb. 1, 2024. Poultry growers can attend the IPPE on Tuesday, Wednesday and Thursday. Registration will begin each morning at 7 a.m. at

the Georgia World Congress Center, 285 Andrew Young International Blvd., in downtown Atlanta. A completed registration form and a 2024 Grower Days coupon are required. Registration forms will be located at the Expo and should be completed onsite. Coupons are available through state poultry organizations. ■

INTERNATIONAL PRODUCTION & PROCESSING EXPO GROWER DAYS

Admission Only \$5 (USD) | Jan. 30-Feb.1, 2024 | Georgia World Congress Center | Atlanta, Ga., USA



Compliments of
U.S. Poultry & Egg Association
American Feed Industry Association
and the North American Meat Institute



This is a great opportunity to network with others who share similar interests and concerns.

To take advantage of the reduced admission fee, you must be a U.S. contract grower and bring this coupon along with a completed registration form to a cashier in the B or C Building registration lobby of the Georgia World Congress Center. Preregistration is not available.

JUST
DON'T START A
SMALL BUSINESS.

INVEST IN YOUR FUTURE.

No matter your goals, we offer creative loan solutions for your poultry farm.

To learn more, visit liveoakbank.com/ag



LiveOakBank®

©2023 Live Oak Banking Company. All rights reserved. Member FDIC. Equal Housing Lender. 🏠

SIMILAR \neq SAME

**ONLY PLT CAN CLAIM
SAFE, EFFECTIVE AMMONIA CONTROL
AT ANY TIME**



SAFE TO APPLY
AROUND BIRDS

EPA
SAFER
CHOICE

FORMULATED
PRODUCT WITH
CONSISTENT
EFFICACY



You need a litter amendment that works the first time, every time. Only PLT® has consistent, predictable performance to help you save money on fuel, support performance, and create a safer environment.

JonesHamiltonAg.com



A BIOSECURITY REVIEW

Dr. Isabella Hannay, College of Veterinary Medicine, Mississippi State University



The dissemination of infectious disease is one of the biggest threats to the poultry industry. Aside from the losses to productivity and increased mortality, with certain diseases total depopulation is required. A preventative step we can take is to maintain excellent biosecurity. Biosecurity refers to

procedures used to prevent the introduction and spread of disease-causing organisms in poultry flocks. This article will summarize a number of aspects of biosecurity and make recommendations consistent with the NPIP Program Standards and US Poultry and Egg Association guidelines. Biosecurity practices vary between companies so it is important to be familiar with the specifics of your company's protocols.

Record Keeping

All establishments should have a written biosecurity plan which can be accessed by personnel. The plan will include training materials that should be completed at hire and reviewed as required. Now is an ideal time to review the biosecurity protocols applicable to you as we enter a season of high disease risk. Records should be maintained for each flock and include data on bird health, production, medications, vaccination and mortality. Ideally, records will also document cleaning and disinfection at the farm.

Line of separation and Perimeter Buffer Area

These are functional zones described in the site-specific biosecurity plan which must be observed by growers and visitors. The biosecurity plan offers information on the procedures to be followed when crossing these zones and the restrictions in place. These terms can sometimes be confused so it is vital everyone in contact with the poultry facility knows the difference. The Line of Separation (LOS) is a functional line which separates poultry within a poultry house from exposure to potential disease sources. It is usually the walls of a poultry house but will vary if poultry have access to the outside. The perimeter buffer area (PBA) is a zone surrounding the poultry houses that separates them from areas unrelated to poultry production or high traffic areas. The PBA may include feed bins, manure sheds, composting areas and generators.

Visitors

Before a visitor steps onto a poultry facility, they must ensure they have followed the appropriate down time. This means the time between having contact with other poultry/species of bird and entry to the poultry facility. It is important to consider any backyard poultry, poultry waste and pet birds as this is a common oversight. As the visitor arrives, they must be sure to adhere to the facility's biosecurity procedures. Vehicles must be cleaned and disinfected before entering the site. Personal protective equipment (PPE), including coveralls, hairnets and plastic boot covers, are often required. It is important to use different PPE between poultry sites. Between poultry

houses on the same site, it is a good idea to sanitize your hands and use a disinfectant footbath. Finally, recording visitors is key to ensure traceability should there be an outbreak. Limit visitors to essential personnel and consider reducing visitors during times of high risk. In addition to visitors, equipment is usually not shared between facilities as it can be a vector for disease. If shared, equipment should be thoroughly cleaned and disinfected.

Vermin

All living creatures should be considered a potential source of disease. This includes the obvious rats and wild birds but also insects and even our pets. Access to the poultry house as well as feed bins and litter storage areas should be prevented to ensure no contamination. Feed spills should be cleaned up quickly to prevent attracting wild animals, birds and insects. The areas around poultry houses should be maintained free of vegetation, trash and used equipment to keep rodent and insect populations under control. It is important to pick up mortality every day and dispose of used litter in a timely manner to avoid attracting wild animals. A comprehensive pest control plan should be in place at all poultry facilities.

Inspect Flocks Daily

Growers should inspect their flocks daily. During these inspections, growers should recognize and report increased morbidity and mortality. The expected levels of morbidity and mortality should be defined by your biosecurity plan. Reports of increased morbidity and mortality should be investigated so appropriate action can be taken and reportable disease agents are ruled out. It is advised that mortality is disposed of on-site, if possible. This prevents cross-contamination to other facilities. Mortality disposal procedures will be covered in your biosecurity plan.

Replacement poultry

Replacement poultry is sourced from health-monitored flocks which are compliant with NPIP guidelines. They should be transported in equipment and vehicles which are regularly cleaned and disinfected.

Water supplies

Poultry facilities use large volumes of water every day. Water is used for a drinking source, evaporative cooling and cleaning. The water we use can act as a reservoir for disease depending on where it is sourced from and how it is treated. For example, water coming from a surface water source should be treated prior to being available for drinking. If surface water is used for cleaning, it is advised that subsequent disinfection is used.

This responsibility to maintain excellent biosecurity practices lies with all of us involved in the poultry industry. Strict compliance to your biosecurity plan can prove vital in the face of a regional disease outbreak so we encourage you to review your current practices. ■

NEW LEGISLATURE FACES WEIGHTY ISSUES IN 2024

The Mississippi Legislature convenes Jan. 2 for a 125-day session. The first session after an election year is longer than the other three years when the session lasts 90 days. The House of Representative will convene with 25 new members and the Senate has seven new members.

The turnover for each chamber is about average for the last several elections. The partisan breakdown changed slightly. The House will have 79 Republicans, 41 Democrats and two independents. The Senate partisan numbers stayed the same 36 Republicans and 16 Democrats.

Lt. Gov. Delbert Hosemann was re-elected to lead the Senate, but in the House, Speaker Philip Gunn did not seek re-election. Earlier in December, the House Republican Caucus, which is two members larger than before the election, nominated Rep. Jason White, R-West, as Speaker and Rep. Manly Barton, R-Pascagoula, as Speaker Pro Tempore.

Early in the session, Lt. Gov. Hosemann and Speaker White will name committees, committee chairs and committee members. There is a lot of talk among representatives that there could be new committees created and new leadership of some existing committees.

One thing that will be different is that there will not be a Legislative Budget Committee recommended budget to guide the House and Senate in setting spending priorities. State law requires the governor and the Legislature to agree in November on a revenue estimate on which to base the budget. The committee and the governor could not agree. In December the Legislative Budget Committee after meeting in executive session in decided not to produce a recommended budget.

Gov. Tate Reeves will still release his Executive Budget on January 31 as required by law. He is expected to use the higher estimate that came from a group of experts. He wanted the higher number which he said would make it easier to continue reducing the personal income tax until it is eliminated. The Budget Committee pointed to tax collections in recent months that have not met expectations as their reason to be more cautious.

Some of the issues that have been bubbling during this election year that the Legislature could consider include:

- Public School/Parental Choice – to allow parents to decide what school their children attend and allow the state funds to follow the child.
- Campaign Finance Reform – this is a priority for Lt. Gov. Hosemann, who filed complaints against Sen. Chris McDaniel for not complying with the campaign finance laws on out of state funds and reporting donors.

- Continued Funding for the Emergency Road and Bridge Repair Fund – Created in 2018, this program has pumped \$545 million for city and county road and bridge repairs. MPA has a seat on the ERBEF Advisory Board.

- Foreign ownership of Farmland. A study committee chaired by Agriculture and Commerce

Commissioner Andy Gipson and the chairmen of the House and Senate Agriculture and Judiciary A committees filed a report Dec. 1. (1) Current Mississippi law lacks a clear, workable enforcement mechanism, (2) Continued unrestricted foreign ownership of Mississippi's agricultural land and water rights especially by foreign adversaries as defined federal law presents a serious concern to Mississippi and to national security, including food security; and (3) At a bare minimum, the Legislature should pass an enforcement mechanism with appropriate reporting requirements and legal enforcement procedures, along with any exemptions as may be necessary or appropriate

- Judicial Redistricting – in the fourth year after the Census, the Legislature redraws the districts for the circuit and chancery courts. The Legislature could also redraw the districts for the Court of Appeals and the Supreme Court. Changes to the districts are made based on changes in population but also on case loads in the courts.

- Pharmacy Benefit Managers – The Senate killed a Pharmacy Benefit Manager bill from the House in the 2023 session, but the issue will return in 2024. The 2023 legislation would have imposed a fee on every prescription for employer health plans that use a pharmacy benefit manager.

- Public Employment Retirement System (PERS) – Mayors have complained that the increases proposed by the PERS board in the local government payments into the retirement system could result in local tax increases. State agencies and local governments, schools, universities and colleges pay into PERS.

- Expand Medicaid – Both Speaker-to-be White and Lt. Gov. Hosemann have also said they are willing to investigate the pros and cons of expanding Medicaid to add more Mississippians to the rolls. ■



Rep. Jason White,
R-West, Speaker

TRUE INDEPENDENCE



50% USDA GRANT AND UP TO 40% TAX
CREDIT

Solar South, LLC

*USDA Grant pays you to improve your farm with solar panels.
Solar panels pay for themselves in just 6-10 years!
USDA Grant expires in April 2024, take advantage while you can!*



SOLAR SOUTH
LLC

601.498.1514

SOLARSOUTH.ORG

YOUTH CONTESTS EDUCATE STUDENTS ABOUT THE POULTRY INDUSTRY

Tannah Christensen, Poultry Science Extension Instructor



This year has been filled with an assortment of contests and programs ranging from the state's 4-H culinary prep contests to backyard growing. 4-H'ers and FFA participants from across the state competed in the vast array of contests at both the state and national levels and are in full preparation for the 2024 year.

While preparing and testing knowledge in the spring, the summer brought on the sunshine and fun with camps and opportunities for exploring the world of poultry.

The Dixie National Rodeo and the Mississippi State Fair bring not only an assortment of exciting events including the Dixie National Crepe Cook-off Contest and the 4-H Omelet Cook-off Contest at the Mississippi State Fair 4-H Fun Day. Judges are given the task of evaluating the state's top crepe and omelet chefs on their cooking and serving skills while also demonstrating their presentation skills and nutritional knowledge while preparing meals as well as gaining a deeper understanding of food safety and its importance. At both contests, monetary awards are given to the top three individuals or teams of 1-2 participants as well as a best beef award sponsored by the Mississippi Poultry Association, Mississippi Egg Marketing Board, and Mississippi Beef Council.

National contests are a well-deserved and rewarding opportunity for the State's top individuals and teams. April and May not only bring on Spring weather but also our FFA and 4-H state contests, and boy, the competition is fierce. FFA and 4-H Poultry Judging teams use techniques to develop

reasoning and decision-making skills while also expressing those skills through oral reasoning. These contests cover the majority of the industry and allow understanding through activities ranging from production and management to the quality of finished products. The 1st place FFA team advances to the National FFA Poultry career development event competition in Indianapolis while the 1st place 4-H team advances to the National 4-H Poultry and Egg Conference judging competition.

If you enjoy a real nail-biter of a contest, the Avian Bowl contest is where you need to be. Teams are tested to the max on their knowledge of avian facts through fast-paced questioning. In the double-elimination contest, the top state team advances to Louisville, KY, for the national competition to compete for the national title. Aside from our team competitions, individuals test their culinary and presentation skills with our Egg Chef Challenge and Poultry BBQ Cook-off contests. Using specific rules for each contest, participants prepare a dish of their choosing while also demonstrating their communication skills and knowledge of the industry. As with the 4-H poultry judging and avian bowl contests, top individuals will advance to the national contest in November.

As you can see, there is a place and contest for anyone interested in poultry. For more information regarding the state youth programs, visit <http://extension.msstate.edu/4-h/4-h-livestock-program/youth-poultry>. If you know any youth interested in poultry or if you would like to support any of the following contests or programs, please contact Tannah Christensen t.christensen@msstate.edu. ■

GOV. REEVES COMMENDS MPA'S 12TH ANNUAL CHICKEN, EGG DONATION

MPA's 2023 donation of chicken and eggs to Gov. Tate Reeves Nov. 16 will send almost half a million servings of protein to soup kitchens and food pantries around the state.

Gov. Reeves chose Extra Table to distribute the products to needy families. This is the 12th year that MPA member companies have donated products to the governor.

Since the donations began during the term of Gov. Haley Barbour, MPA has donated almost five million servings of protein to Mississippi's governors.

"I have to say a huge thank you to the Mississippi Poultry Association and its members. This donation is incredibly important and will help to ensure families across the state have a good meal during the holiday season," said Gov. Reeves, noting that since 2011 the

continued on next page



From left, Gov. Tate Reeves, First Lady Elee Reeves, Dr. Ryn Laster, Cal Maine, MPA Immediate Past Chair and Bobby James, Current Chair of the Board of Directors.

member companies' "impact on fighting hunger has been tremendous."

MPA Board Chair Bobby James with Amick Farms told the crowd on the grounds of the Governor's Mansion that "Mississippi has a well-deserved reputation as being the most generous state in the nation and the members of the Mississippi Poultry Association lead in that generosity. Throughout the year, these companies donate hundreds of thousands of pounds of meat and millions of eggs. We look forward to making this donation to you each year. During your first term in office, the members of the Mississippi Poultry Association have donated 2.3 million servings of protein."

He reminded the audience of the beginnings of the U.S. poultry industry 100 years ago when a farmwife in Delaware ordered 50 chickens and 500 were delivered. Within a couple of years, she was raising 10,000 chickens at a time. The Mississippi Poultry Association was formed in 1937.

The Association includes the 31,800 people that work in the industry and the 1,700 farm families that raise these chickens. Poultry is Mississippi's largest agricultural industry with a total economic impact of \$23 billion. Another 67,800 jobs are generated because of the poultry industry. ■

continued from previous page



MPA Chairman of the Board Bobby James, Amick Farms, speaks at the Governor's Mansion

LET OUR TEAM OF POULTRY EXPERTS FIND A SOLUTION TO FIT YOUR NEEDS!



Bebe Williams
SENIOR VICE PRESIDENT
909 N 16TH AVENUE | LAUREL, MS
BEBE.WILLIAMS@COMMUNITYBANK.NET
601.422.4106
NMLS #415388



Cory Rawson
SENIOR VICE PRESIDENT
323 E THIRD STREET | FOREST, MS
CORY.RAWSON@COMMUNITYBANK.NET
601.469.7097
NMLS #409191



Jordan Graves
ASSISTANT VICE PRESIDENT
202 WEST JESSAMINE | ELLISVILLE, MS
JORDAN.GRAVES@COMMUNITYBANK.NET
601.477.1044
NMLS #1402058



Whitt Conner
ASSISTANT VICE PRESIDENT
1255 W GOVERNMENT ST. | BRANDON, MS
WHITT.CONNER@COMMUNITYBANK.NET
601.706.0309
NMLS #1691175

MCLAURIN PORTRAIT INSTALLED IN MISS. POULTRY HALL OF FAME ON NOV. 1

Friends, colleagues, and university officials on Nov. 1 praised the contributions of Steve McLaurin, the newest member of the Mississippi Poultry Hall of Fame.

McLaurin's portrait was installed at the MSU Poultry Science Department along with the 36 prior individuals who have built and grown the poultry industry in Mississippi. Steve is currently Peco Foods' Special Projects Manager.

Created in 1973, the Hall of Fame includes founders of companies, professors, and researchers, and those important in the growth and development of the industry into the state's largest agricultural industry.

Speakers noted McLaurin's dependability at jobs he has held, his role as a mentor and his long-term support of MSU. Before coming to Peco, he also worked for B.C. Rogers, Sanderson Farms, and Griffin Industries in his 45 years in the industry. Steve praised his wife Kay for his success.

He has served on the Mississippi Poultry Association Board of Directors for more than two decades including as chair of the MPA Board of Directors in 2009, 2015 and 2020.

Speakers included Roddy Sanders-Peco Foods' Director of Operations, Dr. Phil Stayer, Poultry Consultant, Dr. Tim Cummings with Zoetis, Dr. Tim Chamblee, retired MSU professor, Dr. Wallace Morgan, retired MSU Poultry Science Department Head and a former professor of Steve's. Others included Mack Walker, incoming MPA Board Chair, and Dr. Scott Willard, dean of the MSU College of Agriculture and Life Sciences, and Shane Patterson, now with QC Supply, who was mentored in his first job by McLaurin at Peco.

McLaurin graduated from Mississippi State University in poultry science in 1979. In 2020, he was named a College of Agriculture and Life Sciences Distinguished Alumni Fellow for the MSU Poultry Science Department. ■



Steve and Kay McLaurin



From Left, Steve McLaurin with past Hall of Fame inductees, Henry Welch, retired from Peco, Dr. Wallace Morgan, retired from MSU Poultry Science, and Peco Foods CEO Mark Hickman.



All the Peco "family" that attended the Hall of Fame installation



Roddy Sanders at the podium



From Left, Jonathan Moon, Dr. Ken Macklin, Jeff Little and McLaurin

We Finance

Poultry | Land | Agribusiness | Equipment | Crops | Livestock | Timber | Aquaculture



First South is how you grow.



800-955-1722 | FirstSouthLand.com



**AGUP &
RUN with US!**



**WE'LL BEAT *ANY*
PRICE ON A COMPETITIVE
TRACTOR!**

Centreville 601-645-5214
Hattiesburg 601-544-6461
Laurel 601-426-3204

Mendenhall 601-847-3844
Pearl 601-724-2860
Poplarville 601-463-6070

Summit 601-276-7515

AgUp.com



JOHN DEERE



MISSISSIPPIANS CHOSE THREE FINALISTS FOR BEST FRIED CHICKEN IN A MISSISSIPPI BASED RESTAURANT

The search for the best fried chicken in Mississippi is down to three finalists, one each from North, Central and Southern Mississippi.

After 1,000 votes from customers of Mississippi-based independently owned restaurants, the top three are: Mississippi Fried Chicken in Waynesboro, Pap's in Grenada, and Annie M's Café in Flora. Each will receive a visit from the Mississippi Poultry Association tasting team to choose the winner.

The MPA's online contest for Mississippians to vote for the restaurant they thought served the best fried chicken in Mississippi closed Dec. 1. The judges will select a winner and the Best Fried Chicken in Mississippi will be announced at the Dixie National Rodeo February 14.

Last year, MPA held an online contest for the Best Chicken Wings in Mississippi. Nectar Farms in Pearl won.

MISSISSIPPI'S BEST FRIED CHICKEN FINALISTS

**MISSISSIPPI FRIED
CHICKEN
IN
WAYNESBORO**

**PAP'S
IN
GRENADA**

**ANNIE M'S CAFE
IN
FLORA**



Merry Christmas

from the
**Top Ag Lender
In The Nation**



ICBA named First Financial Bank as the top ag lender in the nation for 2023 in the \$1 billion asset category.



Lee McDill
Ag Lending Officer
lmcdill@ffb1.com



Michael Barnes
SVP/Ag Lending Officer
mbarnes@ffb1.com



FIRST FINANCIAL BANK
In the Business of YOU.

204 North Van Buren | Carthage, MS 39051 | 601-267-0095
www.ffb1.com | @FFBank1

Approved to offer SBA loan products under SBA's Preferred Lender Program. FSA and Farmer Mac Preferred Lender.

MEMBER SPOTLIGHT:



Robert "Bobby" Crowe
Executive Sales Manager –
Methionine US/CAN
Robert.Crowe@novusint.com



NOVUS Sales Support
for Mississippi
Ashley Drake
Executive Sales Manager
and Team Lead
Ashley.Drake@novusint.com



NOVUS Technical Service Support
for Mississippi
Bob Buresh, Ph.D.
Executive Technical Sales Manager
Bob.Buresh@novusint.com

NOVUS is the intelligent nutrition company, combining global scientific research with local insights to develop innovative, advanced technology that gives protein producers more so they can sustainably achieve better results.

Our innovative solutions, services and programs are Made of More™, delivering science-based nutrition options supported by experts around the globe to help support growth performance, and optimize meat and carcass quality, gut health, reproduction and egg production. Working alongside poultry producers, nutritionists, veterinarians, and feed mills, NOVUS is feeding solutions instead of treating problems.

Key products for the poultry industry Methionine

The first-ever liquid methionine source, ALIMET® Feed Additive is made with the HMTBa molecule offering 88% methionine activity. As the methionine source with more, these organic acids are known to inhibit the growth of microorganisms in the feed, help maintain performance during heat stress and

- Improve feed intake and conversion ratio
- Optimize meat development and yield
- Is energy efficient with birds reaching target weight on average one day sooner
- Reduce mortality and condemnation rates

As a liquid, ALIMET® Feed Additive offers more at the farm, too. It's easy to handle, mix and pellet, requiring less labor. Thanks to the AIMS® automated inventory system, NOVUS can remotely monitor product usage to automatically order more product or identify problems if the product level varies too much from historic amounts.

Organic Trace Minerals

With superior bioavailability and absorption thanks to a unique 2:1 chelated structure, MINTREX® Bis-Chelated Trace Minerals stand out against other trace mineral sources. This source of organic trace minerals offers more mineral uptake for less inclusion, strong bones and tissue, robust chicks through maternal nutrition and methionine value that counts.

In MINTREX® trace minerals, organic zinc, copper, or manganese are linked with methionine source HMTBa, providing value beyond traditional minerals. With methionine already in this product producers can reduce overall amino acid supplementation. The HMTBa works to protect the mineral from antagonism in the gut. This improved bioavailability means producers can feed fewer minerals and at a lower overall mineral inclusion. These factors impact the labor at the farm or the feed mill. It all means better production efficiency and more money in the wallet.

For nearly two decades, MINTREX® Bis-Chelated Trace Minerals have demonstrated value on poultry farms by helping to improve:

- Feed conversion ratio by 2-3 points and body weight gain by 2%
- Laying rates and hatchability
- Livability up to 12%
- Laying rate with 2-5% more eggs produced
- Eggshell strength and quality
- Skin and footpad health
- Incidents of wooden breast and white striping

The three types of MINTREX® trace minerals are designed to support birds in every stage of life.

To learn how NOVUS can help you do more with your flock, visit novusint.com

TRUE INDEPENDENCE



50% USDA GRANT AND UP TO 40% TAX
CREDIT

===== **Solar South, LLC** =====

*Does your 4-6 house farm pay less than \$9,000 per year for electricity?
Our customers do! Ask us how!*



SOLAR SOUTH
— L L C —

601.498.1514

SOLARSOUTH.ORG

NEARLY 200 ENROLLED IN 12TH ANNUAL POULTRY CHAIN IN 2023

Tannah Christensen, Poultry Science Extension Instructor

If you visited the barns at the 2023 Mississippi State Fair on Friday, October 13th, it didn't take you long to feel the excitement in the air. Barn 13 was full of creativity and the competition was fierce.

Each year, these projects continue to improve, and the 2023 State 4-H Poultry Chain Show projects were nothing short of amazing. Out of 193 total enrolled participants in this year's chain project, a total of 90 4-H'ers from across the state came to compete for the state titles.

Mississippi State University's Department of Poultry Science hosted the 12th annual State 4-H Poultry Chain Show at the Mississippi State Fair as an opportunity for participants to showcase their summer projects at the state level. The project not only allows participants the opportunity to develop husbandry skills along with poultry management and disease awareness, but also establishes valuable life skills continue to for a lifetime.

Participants receive their chicks in May to grow throughout the summer. While managing their birds, participants are keeping a record of their project including budgeting expenses, feed records, mortality records, etc. Understanding the importance of their project on a small scale opens the door to a deeper understanding of the poultry industry and its importance to the economy and society. The showmanship category allows participants to display their presentation skills by demonstrating handling, examining, and positioning the bird while communicating their knowledge gained ranging from the bird's breed and parts of the bird to the industry and management practices.

Over the years, we've seen an increase in the interest in the showmanship category of the contest, and each year it becomes increasingly difficult to choose showmanship winners due to the high quality of showmanship abilities.

Our certified judge from Arkansas was able to join us again and was proud of the development of our youth. This program has come a long way and continues to prosper. It has been



exciting to watch the program grow to the next level and better prepare the youth of Mississippi for the opportunity to compete at the national level if they are willing. We've had the great blessing of seeing some of these youth compete for 10+ years, and it's truly been a joy to watch them not only grow in their projects but mature in life.

Participants could enter one of the four categories (Junior Layer or Meat and Senior Layer or Meat) with the showmanship competition as an optional category. A total of 32 placings were awarded in four categories (Junior Layer and Meat and Senior Layer and Meat) with grand and reserve champions as well as 1st to 5th placings in each of the four, in addition to grand and reserve placings in the showmanship competition for both junior and senior classes.

A huge thank you to our donors for their contributions to the \$10,900 in monetary awards for our winners. The following companies graciously donated this year's contributions: Southern Ag Credit, Mississippi Poultry Association, Mississippi Poultry Association Allied Industry Committee, Mississippi Farm Bureau Federation, Phytobiotics, as well as an anonymous donor. Without these generous donations, this project would cease to exist, and we are so very thankful for such gracious support of the youth of Mississippi and the opportunity to educate the next generation on the importance of agriculture and the poultry industry.



Plans are already underway for the 2024 projects to begin. If you are interested in donating to next year's project or participating, please contact Mrs. Tannah Christensen at Mississippi State University, Department of Poultry Science.

We would like to congratulate the following participants for their hard work and success in the 2023 4-H Poultry Chain Project State Show.

Senior Showmanship Grand Champion –
Emma Wofford (Desoto County)
Donation by Southern Ag Credit \$300

Senior Showmanship Reserve Champion
– Emmalee Lentile (Desoto County)
Donation by Southern Ag Credit \$150

Junior Showmanship Grand Champion –
David Baggett (Union County)
Donation by Southern Ag Credit \$300

Junior Showmanship Reserve Champion
– Olivia Wofford (Desoto County)
Donation by Southern Ag Credit \$150

Junior Meat Grand Champion – Annalyn
Cates (Lamar County)
*Donation by Mississippi Farm Bureau Federation
\$1,000*

continued on next page



Pick up more savings with a Konavi® Feeding System

Start your whole house brood with a Konavi® Feeding System and eliminate the need for supplemental feed trays. Konavi® Feeders have a low pan height that lets chicks eat from the outside of the pan from day one.

With no trays to pick up and clean, you save labor costs and reduce feed waste. Your birds get easy access to free-choice feed from start to finish.



CHORE-TIME

Let's grow together®

www.choretime.com

Learn more at
choretime.com/TrashTrays

Chore-Time is a division of CTB, Inc.
A Berkshire Hathaway Company

2023 STATE 4-H POULTRY CHAIN SHOW



Ila Haze Manning



Elliot Turbyfill Wayne County
(competed in the chain for 10+ years 2023 was his last year)



So glad to have the Ag Commissioner stop by.



Matthew White
(Oktibbeha County) and
Lucy Graham Turnage
(Oktibbeha County) did
his cutest coop as a formal
proposal for a dance

YOUR POULTRY LOAN EXPERT

- New Construction
- Facility Improvements
- Purchase
- Expansion
- Refinancing
- Real Estate



301 S Court Street | Ellisville, MS 39437 | OFFICE 601-477-9490
CELL 601-624-9278 | NMLS #415383 | jswindle@firststatebnk.com



Member FDIC

JAY SWINDLE
Senior Vice President | Lending

Junior Meat Reserve Champion –
Elliot Morris (Wilkinson County)
*Donation by Mississippi Poultry Association Allied
Committee \$500*

1st Baylee Frazier (Perry County)
Donation by Southern Ag Credit \$300

2nd Ansley Hubbard (Tippah County)
*Donation by Mississippi Poultry Association Allied
Committee \$250*

3rd Kiley Cox (Clay County) *Donation by
Southern Ag Credit \$200*

4th Selah Hubbard (Tippah County)
Donation by Southern Ag Credit \$150

5th Lillian Johnson (Benton County)
Donation by Southern Ag Credit \$100

Junior Layer Grand Champion – Heidi
Hood (Forrest County) *Donation by
Mississippi Poultry Association Allied
Industry Committee \$1,000*

Junior Layer Reserve Champion –
Levi Thompson (Union County)
Donation by Southern Ag Credit \$500

1st Aliah Thompson (Union County)
Donation by Southern Ag Credit \$300

2nd Shelby Rosco (Scott County)
Donation Southern Ag Credit \$250

3rd Reese Tatum (Desoto County)
Donation by Southern Ag Credit \$200

4th Hunter Rule (Desoto County)
Donation by Southern Ag Credit \$150

5th Olivia Wofford (Desoto County)
Donation by Southern Ag Credit \$100

Senior Meat Grand Champion – Emmalee
Lentile (Desoto County) *Donation by
Mississippi Poultry Association \$1,000*

Senior Meat Reserve Champion – Brynley
Speck (Desoto County) *Donation by
Mississippi Poultry Association \$500*

continued 2023 Winners

1st Layton Varner (Rankin County)
Donation by Southern Ag Credit \$300

2nd Ayden Wolken (Simpson County)
Donation by Phytobiotics \$250

3rd Cadence Barnes (Tippah County)
Donation by Anonymous Donor \$200

4th Terin Long (Rankin County)
Donation by Southern Ag Credit \$150

5th Maggie Beyer (Itawamba County)
Donation by Southern Ag Credit \$100

Senior Layer Grand Champion –
Emma Wofford (Desoto County)
Donation by Mississippi Poultry Association \$1,000

Senior Layer Reserve Champion –
Elliot Turbyfill (Wayne County) *Donation
by Mississippi Poultry Association \$500*

1st Jenna Claire Ishee (Jasper County)
*Donation by Mississippi Poultry Association Allied
Industry Committee \$300. ■*

BANKPLUS SCHOLARSHIP ALLOWS TWO MSU STUDENTS TO PRESENT PATHOGEN RESEARCH FINDINGS

Two Mississippi State University Poultry Science students presented their research on pathogens at the Poultry Science Association thanks to the annual BankPlus Travel Grant to the Miss. Poultry Foundation.

BankPlus makes an annual donation to the Mississippi Poultry Foundation for this travel grant. The grants began in 2016. Originally \$1,000, BankPlus generously increased the amount to \$2,500 per year starting in 2022.

Kenny Williamson, BankPlus Senior Vice President, said, “Helping these students present their research that will help solve problems poultry companies and growers face is something we at BankPlus are proud to do. We know these young scientists will go on to productive careers in the poultry industry.”

Hudson Thames and Diksha Pokhrel were awarded the BankPlus travel award for 2023. They are both in Dr. Li Zhang’s Lab. The title of their talks were “Freezing and Refrigeration Decreases Aerotolerant Campylobacter Jejuni Counts On Chicken Drumsticks During Storage” for Pokhrel and, “The Expression Of Biofilm Associated Genes In Salmonella Reading Biofilms At Various Stages Of Development” for Thames.

The Poultry Science Association (PSA) is a professional organization consisting of approximately 1,800 educators, scientists, extension specialists, industry researchers, administrators, producers, and college students who are committed to advancing the poultry industry. This year’s meeting was in Philadelphia, PA.

Born and raised in the foothills of Nepal, Diksha Pokhrel earned her undergraduate degree in veterinary science and animal husbandry, honing her understanding of the intricate balance within ecosystems. Diksha’s academic journey took a molecular turn during her master’s studies, where she explored the realms of molecular genetics and

genetic engineering, delving into the fundamental codes of life.

In 2021, she embarked on an adventure, landing in the United States to pursue a Ph.D. in poultry science. Currently in her third year of doctoral research under the supervision of Dr. Li Zhang, Diksha’s research focus revolves around unraveling the survival mechanisms of *Campylobacter jejuni* in poultry processing environments.

“Her dedication is carving a path toward significant breakthroughs in food safety and public health,” said Dr. Zhang.



Diksha Pokhrel



Hudson Thames

Hudson Thames grew up in Charleston SC. Originally wanting to pursue veterinary medicine, he received a B.S. in Animal & Dairy Science at MSU. However, his love of food led him to pursue further education in food safety and microbiology under the mentorship of Dr. Anuraj Theradiyil Sukumaran within the Poultry Science department of MSU. After completing his M.S. degree in 2021, Hudson is now entering the third year of his Ph.D. under the supervision of Dr. Zhang.

According to Dr. Zhang, “Throughout his academic career, Hudson has investigated *Salmonella* and *Campylobacter* in poultry processing, including the prevalence of these pathogens on broiler meat during processing, as well as the efficacy of antimicrobials against various strains of *Salmonella*. Over the last year Hudson has investigated the expression of biofilm related genes in *Salmonella* at different stages of maturity.” ■

TARGET YOUR FLOCK'S FEED CONVERSION



Don't risk your flock's feed conversion because of old, inefficient pans. Upgrade them with GrowerSELECT® Classic Flood feeders available in 10 different configurations.

Extended, non-prorated 5 year warranty

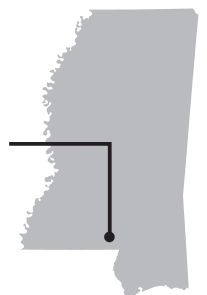


***Pricing subject to change without notice**

(601) 731-3003

**545 US-98 West
Kokomo, MS**

© 2022 Hog Slat Inc. All Rights Reserved. Prices and promotions subject to change without notice. Hog Slat reserves the right to correct printing and pricing errors.



THREE STUDENTS WIN SOUTHERN AG CREDIT TRAVEL GRANT TO PRESENT RESEARCH AT IPPE IN JANUARY

Three Mississippi State graduate students will be presenting their research at the International Poultry Scientific Forum (IPSF), held in conjunction with the International Poultry Processing Exposition in Atlanta thanks to Southern Ag Travel Grants awarded by the Mississippi Poultry Foundation.

Southern AgCredit makes an annual \$1,500 donation to the Mississippi Poultry Foundation for this travel grant. The grants were first awarded in 2016.

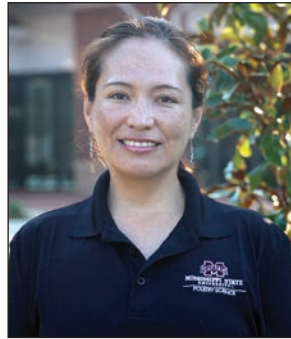
"Southern Ag Credit is pleased to assist Mississippi State University students in presenting their research at the IPSF. Their research will further the growth of the poultry industry. Southern Ag Credit is committed to investing in future generations that will continue to ensure a strong poultry industry," said Brent Barry, regional vice president of Southern Ag Credit.



Charis Waters is a Master of Science student of Dr. Pratima Adhikari, and the title of her abstract is - Understanding the branched-chain amino acid interactions in Hy-Line W-36 layer pullets during 6-12 weeks of age. The objective of this study was to investigate the relationship between branched-chain amino acids (BCAA) on the performance and bone quality of

Hy-Line W-36 layer pullets during the grower phase, 6-12 weeks of age. Results indicate that performance metrics such as body weight gain, adjusted daily gain and feed conversion can be maximized in diets with high Leucine: Lysine (220) and Valine: Lysine (95) ratios.

"Adjusting Leucine levels could influence the Valine and Isoleucine needed to achieve maximum body weight gain and adjusted daily gain," Water said.



Nelly Cribillero is a PhD student of Dr. Pratima Adhikari, and the title of her abstract is - Evaluation of almond hulls as an alternate feed ingredient on performance, egg quality and digestibility in Lohmann LSL-Lite layer hens. The study focuses on the supplementation of almond hulls, a by-product of almond processing, and carbohydrases in the feed of laying hens in the peaking phase and evaluates their effects on egg production, egg quality, and digestibility. Hens fed diets with 5% almond hulls in combination with the xylanase-cellulose enzyme had a positive effect on their egg production and feed intake in comparison with other levels, without affecting egg quality traits or egg mass.

"Our results can be applied to the formulation of diets for egg commercial farms, to reduce waste from the almond industry, and to reduce feed costs for egg producers," Cribillero said.



Diksha Pokhrel, a PhD Student of Dr. Li Zhang, and the abstract title is - Genomic analysis of *Campylobacter jejuni* isolated from commercial broiler processing plants. *Campylobacter jejuni* is the leading cause of bacterial foodborne infections in the United States. Her research found that these bacteria have different levels of tolerance to oxygen and to determine why this

is so whole genome sequencing was performed.

"These results showed that all the bacterial isolates had genes associated with virulence factors and genes resistant to multiple antibiotics, which could be a health risk," Pokhrel said. ■

MPA ALLIED INDUSTRY COMMITTEE SUPPORTS MSU'S FUTURE POULTRY LEADERS

The MPA Allied Industry Committee made two generous contributions to Mississippi State University this fall to support the education of future industry leaders.

The committee, composed of the allied members of MPA, voted to donate some of the excess funds from the annual crawfish boils at the Poultry Management School to MSU. The contributions included \$5,000 to the

Poultry Chain and \$5,000 to the Becky Beard Memorial Scholarship (BBMS).

Individual Allied Industry member contributions at the MPA Convention also helped to make the BBMS an endowed scholarship within the MSU Foundation. The Committee's \$5,000 contribution brings the Becky Beard endowment to more than \$30,000, allowing annual scholarships of more than \$1,000. In addition to academic

performance, the scholarship recipients must show a strong history of having worked in the industry while students.

The 2023 donation to the Poultry Chain is the Committee's second. Early in the chain's history, MPA allied members stepped up to help get the project off the ground. Students in elementary school through high school compete at county and then at the state level in raising chickens.



BUILDING WITH INTEGRITY



Build With Us →



Ozark Ag Services:

- Agriculture Structures • Service
- Poultry Equipment • Specialty Barns & Buildings



Founded on faith, integrity and work ethic

Ozark Ag is a leading agriculture construction company dedicated to serving farmers and ranchers nationwide.

Mt. Olive
4954 US 49

Carthage
610 MS-16



CALL TODAY!
601.797.3131 Mt. Olive
601.720.2817 Carthage

 www.ozark-ag.com

MSU RECEIVES US POULTRY 2023 RECRUITING GRANT, DETAILS SOME OF THE USES OF 2022 GRANT

Dr. Ken Macklin, Department Head, MSU Poultry Science



The Department of Poultry Science at MSU annually receives funds earmarked for recruiting from the US Poultry and Egg Association's Harold E. Ford Foundation. This funding is used for a variety of activities that promote poultry in general and specifically try to bring students to the department.

The activities are:

- Hosted **Academic Insights** lunch for student applicants and parents whose student has been accepted to MSU but who have not yet committed. After meeting with the Departmental recruiter, students and parents visit our classroom and laboratory facilities and are treated to lunch and presentation geared to the opportunities a major in Poultry Science provides. Students then go on a tour of the poultry farm, while parents remain and are provided further information about the Department, scholarships, and career prospects that a degree in Poultry Science provides.

- Conducted **Poultry Hatch-out Project** in elementary schools throughout MS; incubators with hatching eggs were placed in 177 classrooms (~4,500 school children) during the final week of incubation. At the end of the week, presentations and Q&A sessions were held, with emphasis on food production, industry, and biosecurity. Several new incubators were purchased for this project.



MSU Poultry Science graduate students and undergraduates join Department Head Dr. Ken Macklin for presentation of the 2023 Harold Ford recruitment check from the U.S. Poultry and Egg Association. This year's check delivered in November was \$29,133.

- FFA, 4H and a Poultry Camp for fifth graders were hosted by the Department where tours of the poultry research farm were conducted, and participants had a week-long hands-on experience focused on poultry and the poultry industry.



- Funding was used for travel to support for the MSU sponsored **Pathways2Possibilities**, which had over 6,100 8th and 9th graders attending this event to explore interactive, hands-on career exploration centers in which our group highlighted the opportunities that a degree in Poultry Science offers.



Funding was used for supplies to conduct a break-out session and departmental recruitment items were handed out at the "**Poultry Science: The People Behind the Bird**" Workshop. Senior 4-H'ers (ages: 14-18) attended the workshop to learn about the poultry industry and career opportunities available.



Provides partial support for the Mississippi State **4-H Poultry Chain Project** that involves around 200 4-H youth and in which approximately 900 birds are entered. Of these, 94 chain participants showed their birds at the state level at the 2022 MS State Fair in October. ■



DIVERSIFIED

DiversifiedAg.com

The **DuraDrive** delivers maximum power, minimal maintenance and unmatched durability for ultimate control of your ventilation program.

- Heavy duty construction for long lifespan
- Quick and easy installation and setup
- Simple, accurate limit switches
- Sealed and lubricated for life
- Durable polyester belts



A family of versatile ventilation solutions



Controllers &
Communication



Heating



Ventilation



Feeding & Watering

ALWAYS THE RIGHT FIT

Diversified's complete solutions enhance performance and maximize results.



MPA PROVIDES PRIZES TO TOP 4-H OMELET CHEFS AT THE MISSISSIPPI STATE FAIR

Sixteen 4-H contestants put their cooking skills to the test at the State Fair in October with three taking home prize money.

The Mississippi Poultry Association provided prizes for the 1st, 2nd, and 3rd place winners. First place winner was Charley Haffey from the Itawamba County 4-H. Charley called her dish, a “Fresh Farmhouse Omelet”. For the first place, MPA gave \$75.00 to Charley and The Mississippi Beef Council gave Charley \$25.00 for the Best Beef Omelet. Second place winner was Henry Klein from the Madison County 4-H. He received \$50 from MPA. He called his dish, “The Junior Ranger Omelet.” Third place was Abbye Buchanan from the Rankin County 4-H. She received \$25 from MPA for her “Good Morning Sunshine Omelet”.

The Mississippi Egg Marketing Board provided the necessary tools to prepare the omelets. Each contestant had 60 minutes to prepare their dish and present it to the judges. Also, Mrs. Donna Meyers, Tupperware Business Leader from Star, gave each contestant a Tupperware gift bag.

Other contestants, selected by their district to compete at the state level were: Logan Parkman of Smith County; Jacob Russell of Covington County; Ellen Russell of Covington County; Jameria Carter of Oktibbeha County; MaKayla Carter of Oktibbeha County; Lydia Carter of Oktibbeha County; Tucker Wilson of Webster County; sibling team John Clayton and Joy Kitchens of Lauderdale County; Penny Haffey

of Itawamba County; Chawan Jernigan of Winston County; Gracyn Foster of Jasper County; and Hannah Lance of Washington County.

Serving as judges were Dr. Ryn Laster, Past Chair of MPA, and current chair of the Mississippi Egg Marketing Board; Hayes Patrick, Deputy Commissioner of the Mississippi Department of Agriculture and Commerce; and Lauren Fortenberry, Event Coordinator for MPA. Serving as the Mistress of Ceremonies was State FFA President, Ashton Luke from Neshoba County. ■



Left to right: First place winner and Best Beef Omelet, Charley Haffey from the Itawamba County 4-H. Second place winner was Henry Klein from the Madison County 4-H. Third place was Abbye Buchanan from the Rankin County 4-H.



MISSISSIPPI LAND BANK

AGRIBUSINESS, OPERATING, & EQUIPMENT FINANCING

Our roots in North Mississippi run deep. For more than 100 years, we have developed trusted, long-term relationships with our borrowers, fellow stewards of the land.

We're here to give you the resources you need to help grow your operation, rooting for you every step of the way.

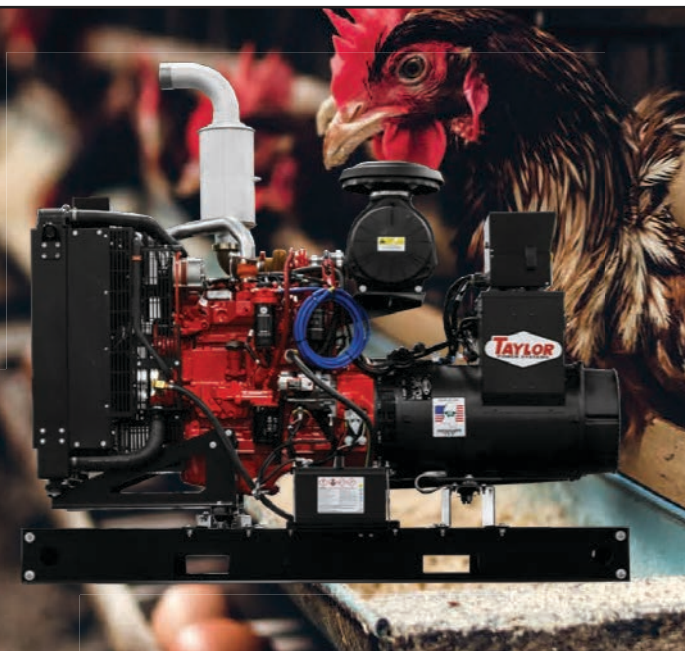
MSLANDBANK.COM



Rooted in Relationships. Grounded in Giving. Advocates for Agriculture.






THE TAYLOR POWER ADVANTAGE



LET US PROTECT WHAT'S MOST IMPORTANT TO YOU.

When power fails, farmers can depend on our American Made agricultural generators.

CALL US TODAY!

www.taylorpower.com | (601) 932-5674 | Follow Us:   

MSU POULTRY SCIENCE BBQ CHICKEN RECIPE

If you have ever been to an event at the Mississippi State University Poultry Science Department where BBQ chicken is served – MPA's Management School or the Homecoming tailgate – you know how mouthwatering the chicken is. Here is the recipe for the secret sauce from Dr. Jessica Wells, Extension Assistant Professor. Keep in mind that Dr. Wells prepares the sauce to feed large groups. You can adjust accordingly.

INGREDIENTS

5 quarts of apple cider vinegar
4 cups of oil
2 lbs. of butter
1 quart of lemon juice
1 lb. of salt
1½ big handfuls of black pepper
1½ big handfuls of crushed red cayenne pepper
½ handful of chili powder

DIRECTIONS

Melt butter but do not let it boil or scorch.
Add salt to butter and allow it to simmer a few minutes.
Add oil and vinegar and allow to simmer a few minutes.
Add black pepper, red pepper, chili powder and lemon juice.
Keep sauce hot, but do not allow it to boil.



Dr. Jessica Wells
Extension Assistant
Professor

Discover Greater From the Ground Up.

Whether you're purchasing a farm, refinancing, retrofitting or even building a new facility, let our **Agricultural Lending** team be the backbone of your business.

To discover a greater banking experience, visit ozk.com/agri or contact us today at (770) 537-2860.



BRUNINI

ATTORNEYS AT LAW



Trey Jones

John Milner

Gene Wasson

ENVIRONMENTAL LAW GROUP

Brunini has premier expertise in environmental litigation, regulatory permitting and compliance issues as well as due diligence and transactional matters. John Milner was noted by Chambers USA as being "instrumental in developing Brunini's environmental practice" into the leadership position it holds today.

John Milner serves as counsel to the Mississippi Poultry Association and has special expertise in poultry-related environmental issues. Partner Gene Wasson also has impressive abilities in the environmental sector. Partner Trey Jones has significant environmental litigation experience.

Listing of areas of practice does not indicate any certification of expertise. Any decision with respect to legal service should not be based solely on this or any other advertisement. Free background information upon request.

Brunini.com
601-948-3101



DuoChain

straight-line chain feeder

Contact your local distributor or sales representative to learn more about this space-saving feeding solution.



Big Dutchman®

+1-616-582-4000 | bigd@bigdutchmanusa.com
WWW.BIGDUTCHMANUSA.COM

YOUR POULTRY FARM + SOLAR POWER = HUGE \$AVINGS

**THE MATH
IS IN YOUR
FAVOR.**

- USDA grants up to 50% of project costs
- 30% federal tax credit
- Accelerated depreciation
- See a return on investment in as little as 2 years



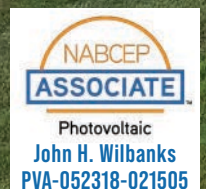
Mississippi Solar was the first solar company established in Mississippi. Since 2009, we've been aiding farmers and small business owners in cutting energy costs. We would be glad to discuss your needs, explain the incentives in detail and develop a functional, cost effective plan for you.

Contact us today!



601-656-6161
gosolar@mssolar.net
mssolar.net

307 Vance Road, Eupora, MS



110 Airport Road South, Suite C
Pearl, Mississippi 39208

UPCOMING EVENTS:

*At all events involving growers, please
practice strict biosecurity procedures*

*The Grower Advisory Committee will meet
quarterly at the call of the Chairman.*

■ Poultry Health Seminar FEBRUARY 14, 2024

Mississippi Ag & Forestry
Museum, Jackson

■ Poultry Management School

MAY 14-15, 2024
Mississippi State University,
Starkville

■ Breeder/Hatchery Seminar

AUGUST 6, 2024
C.L. Neil Building at
Jones College, Ellisville

■ MPA, Inc. Convention SEPTEMBER 12-15, 2024

Hilton Sandestin Golf & Tennis
Resort, Miramar Beach, FL

Growers can attend convention for \$50, all other events are free

We Serve the Farmers Who Serve Mississippi

Southern AgCredit is proud to serve the
farmers who serve Mississippi. Finance your
farm by visiting one of our nearby branches,
or online at southernagcredit.com.



Member of the
Farm Credit
System